

LANCER

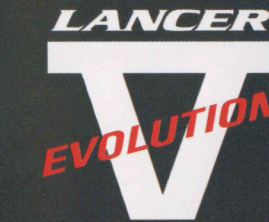
EVOLUTION

*Overall length:4350mm.Overall width:1770mm.Overall height:1415mm.Wheel base:2510mm.
Front tread:1510mm(GSR).Rear tread:1505mm(GSR).Engine:2000 DOHC 16VALVE INTERCOOLER TURBO.
MaxPower:280PS/6500rpm (NET).MaxTorque:38.0kgf-m/3000rpm*





Dimension, Instantaneous Power.



To the strongest sports sedan. Further enhancing driving performance, the "V" debuts.

From IV to V. The Lancer GSR Evolution has evolved further.

Based on know-how gained from the harsh racing field of the WRC(World Rally Championship), the car's performance has been further upgraded through features such as increased engine torque, Brembo brakes, and reinforced suspension have all been upgraded to enhance driving performance.

Born as Mitsubishi's strongest sports sedan that surpasses its class.



The strengthened suspension and braking system transform the driving feel.



DOHC 16-valve Intercooler Turbocharger Engine The power unit of the Evolution V, equipped with a large-capacity intercooler and twin-scroll turbocharger, further evolves the highly refined 4G63 engine. By expanding the nozzle area of the turbocharger and reducing the weight of the pistons, along with detailed engine matching, it achieves a torque increase of 2.0 kgf-m compared to the IV. This allows for exhilarating acceleration utilizing ample power and strong torque in the mid-to-high rpm range.

Reinforced Transmission & Clutch

Fitting for the Evolution aimed at high competitiveness in motorsports, gear ratios were set to prioritize mid-to-high speed while improving the connection between each gear shift. The shift feeling is sporty and direct. Additionally, to accommodate the engine's increased torque, various parts were reinforced, including an increase in synchronizer width and the addition of gear shot peening.

* For the competition-based RS two types of super-close transmissions are available as options.

Suspension system refined through motorsports The MacPherson strut front suspension and multi-link rear suspension continue to evolve further. By significantly widening the tread (front by 40mm, rear by 35mm <GSR>), the cornering limit has been improved. Additionally, the suspension geometry has been revised by changing the arm mounting points, enhancing stability and road contact during cornering. Furthermore, a new inverted strut is adopted at the front, greatly increasing camber rigidity. The front left and right lower arm mounting points are connected by a reinforcement bar to increase lateral rigidity, improving steering feel and the firmness during cornering.

Brake system manufactured by Italy's Brembo

A high-performance brake system with high capacity for motorsports use was jointly developed with Italy's Brembo and adopted in the ∇ model (standard equipment on GSR, optional on RS). The front features 17-inch differently sized 4-pot discs, and the rear has 16-inch 2-pot discs, both upsized from the IV model. The pad material is supplied by Italy's Galfer. Large brake discs with high fade resistance and opposed-type calipers that provide stable braking force even at high temperatures are used. This achieves reliable braking performance from high speeds.

AYC (Active Yaw Control System) + Front Helical LSD Mitsubishi's innovative new technology, AYC (Active Yaw Control System), actively controls the difference in driving force between the left and right rear wheels to manage the vehicle's turning force (yaw moment). By adding a front helical LSD that draws out the capabilities of the front tires, torque distribution across all four wheels becomes possible. This realizes a higher level of cornering performance. It improves traction when exiting corners without spoiling linear cornering.

Standard equipment on GSR.

225/45ZR17 tires & OZ-designed aluminum wheels High-performance tires newly developed exclusively for the Evolution V are adopted. They demonstrate persistent grip even during cornering that generates high G-forces, raising the limit. The wheels use a high-rigidity one-piece aluminum design by OZ exclusively for this model.

1 2000 DOHC 16 VALVE INTERCOOLER TURBO.
Max. Power: 280PS/6500rpm (NET).
Max. Torque: 38.0kgf-m/3000rpm.

2 Twin-scroll turbo

3 Large-capacity intercooler

4 Torque transfer differential for AYC (photographed with cut model)

5 Overall view of the front suspension

6 Pedal force comparison chart during circuit simulation driving

7 225/45ZR17 tires & OZ-designed aluminum wheels

1 Engine performance curve comparison chart 2 Twin-scroll turbo 3 Large-capacity intercooler 4 Torque transfer differential for AYC (photographed with cut model) 5 Overall view of the front suspension 6 Pedal force comparison chart during circuit simulation driving 7 225/45ZR17 tires & OZ-designed aluminum wheels

The fifth evolution began with the suspension. It is fair to say that the Evolution V's suspension potential has been significantly enhanced. The widened tread, the increase in tire size, and the adoption of Italian Brembo brakes are among the many enhancements that eloquently demonstrate this evolution. To handle the engine performance, which achieved a torque increase of +2.0 kgf-m, and to reliably transmit it to the road surface. And to fight for victory in motorsports. Strengthening the suspension was an essential tuning. The instantaneous power generated from it is truly otherworldly, capturing rivals in the blink of an eye, and erasing them from the rearview mirror. At that moment, the V's body becomes full muscular strength.

1 Engine performance curve comparison chart 2 Twin-scroll turbo 3 Large-capacity intercooler 4 Torque transfer differential for AYC (photographed with cut model) 5 Overall view of the front suspension 6 Pedal force comparison chart during circuit simulation driving 7 225/45ZR17 tires & OZ-designed aluminum wheels

The new concept aero body and sporty driver's environment support a spartan driving experience.



RECARO full bucket seat

New Concept Aero Body Learned from Rally

The aerodynamic design of the body is an essential theme in rally stages. The body of the Evolution V has brilliantly evolved as a rally-based vehicle aiming for victory, inheriting the know-how cultivated in the previous Evolution models in each part. The aero parts have been refined in detail. The shape has been optimized considering air resistance, lift, and cooling performance. Particularly noteworthy is the new concept aerodynamic system that combines the delta-shaped wicker inherited from the IV model with a newly designed large rear spoiler with adjustable angle of attack. This system enables optimal settings for all courses from low to high speeds, achieving precise downforce while minimizing the increase in Cd.

Weight Reduction

Locations of Aluminum Parts Used

- Hood • Frontwide fenders • Front lower arms & rear upper arms • Rear cross member • Rear differential support member (RS) • Rear end cross bar (RS) • Rear spoiler (wing section) Other weight reduction items
- Reduced thickness of windshield glass, front & rear door glass, and rear glass

Newly Designed RECARO Bucket Seats (GSR)

Sports-minded headrest-integrated seats emphasizing holdability, compatible with 4-point seat belts. Stepless reclining is possible. The seat cushion length is adjustable to allow the optimal position according to body size. The seat fabric uses Alcantara®, which is slip-resistant and has a high-quality feel.

* Alcantara® is a registered trademark of Toray Industries, Inc.

Driver and Passenger SRS Airbag System (GSR) The Evolution, with its body structure excellent in shock absorption and a robust cabin structure, is equipped with a driver and passenger SRS airbag system. This system instantly inflates the airbags in the event of a frontal collision, mitigating the impact on the head, and serves as a safety device that supplements the seat belts with high effectiveness.

4ABS (GSR)

Full-time 4WD with 4-wheel disc brakes, featuring Mitsubishi's unique All-Wheel Control contributing 4ABS (4-wheel Anti-lock Braking System). With 4-channel control, it functions to prevent wheel lock during cornering and braking on wet roads, ensuring stability and maintaining vehicle posture.

MOMO genuine leather-wrapped steering wheel & leather-wrapped shift knob. The steering wheel adopts a MOMO 3-spoke genuine leather-wrapped design. The thick grip allows for reliable and quick operation. The GSR model includes a driver's seat SRS airbag. The leather-wrapped shift knob is downsized to improve shift feel.

White Meter

Equipped with a white meter that offers excellent visibility and exudes a sporty spirit. It gives the driver a Spartan image.

Enhanced Comfort Equipment (GSR)

Features such as a fully automatic air conditioner that automatically controls airflow and direction to maintain a comfortable interior temperature throughout the year, a radio wave keyless entry system, electrically retractable remote door mirrors, and power windows with safety mechanisms are standard equipment. Additionally, an AM stereo-compatible AM/FM electronic tuning radio with a full logic cassette and a 6-speaker system equipped with an FM diversity antenna is available as an option.



① Rear wicker & adjustable angle rear spoiler ② Driver and passenger SRS airbag system (GSR/audio optional) ③ MOMO genuine leather-wrapped steering wheel with airbag (GSR) ④ Fully automatic air conditioning (GSR) ⑤ White meter ⑥ Genuine leather-wrapped shift knob ⑦ Full logic cassette with AM/FM electronic tuning radio & 6 speakers (optional for GSR) ⑧ Strut tower bar (standard on RS, optional on GSR)

• The SRS airbag system (SRS=Supplemental Restraint System) does not activate from lateral or rear impacts. It only activates when an impact from the front exceeds a set threshold. The SRS airbag system is designed on the premise that seat belts are worn, so please always wear your seat belt.

• ABS is a system that assists the driver's braking operation. Therefore, just like vehicles without ABS, sufficient deceleration is necessary before curves and other situations, and it cannot control reckless driving. Please drive safely.

The Evolution V, which can be called a teleportation device. Its speed is generated not only by the heart and legs.

Speed is also born from the supple and strong body and the driving area inside it, which can be controlled at will. And here, of course,

feedback from rally stages has been utilized. Running backed by know-how to win at the world's top-level rally

That act is irresistibly motorsport. Naturally, the cockpit is equipped with RECARO seats. There is also a MOMO steering wheel.

Everything here shakes the five senses with a dimension-defying drive.

COCKPIT for EVOLUTION V



● PHOTO: GSREVLUTIONV ● Audio is a manufacturer option ● Interior base color / Black ● Photographed with cut body



1996 - 1997
WRC Drivers Champion
Tommi Mäkinen

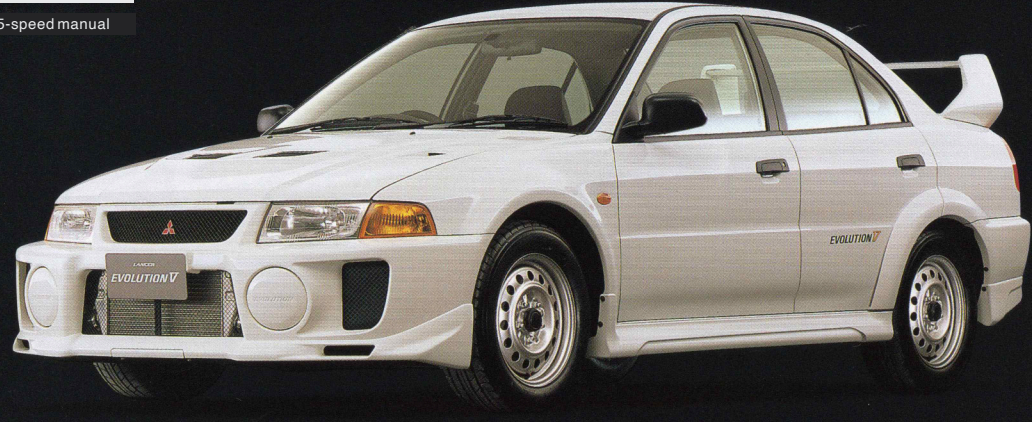


Master the Evolution spirit, and it becomes the "RS".

A competition base car finished purely for participating in motorsports, that is the RS EVOLUTION V.

RSEVLUTION V SPECIFICATION (Made to order)

- FULLTIME 4WD
- 2000DOHC 16 VALVE INTERCOOLER TURBO
- Vehicle weight: 1260kg
- Tire Size: 205/60R15 91H
- Close-ratio 5-speed manual



● PHOTO : RS EVOLUTION V ● BODYCOLOR: Scotia White



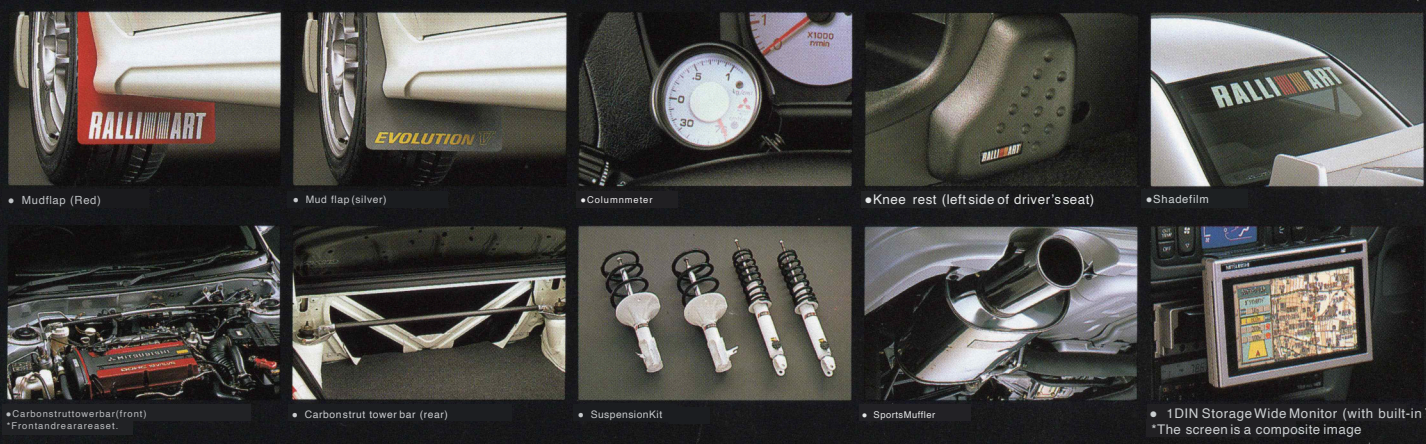
● Interior base color / Black ● Photographed with cut body

RS EVOLUTION V EQUIPMENT

- Front-end crossbar & rear-end crossbar front strut tower bar ● Quick steering gear ratio super crossgear (High/Low) <Option>
- * The RSEvolution V is produced strictly as a competition base vehicle, so soundproofing materials and the like are significantly reduced. Please be aware that interior noise and vibration levels are inferior compared to regular vehicles.

DEALER OPTION

Details about dealer options
Please contact the salesperson.



- Mudflap (Red)
- Mud flap (silver)
- Columnmeter
- Knee rest (left side of driver's seat)
- Shadefilm
- Carbonstrut tower bar (front) *Front and rear are reset.
- Carbonstrut tower bar (rear)
- Suspension Kit
- Sports Muffler
- 1DIN Storage Wide Monitor (with built-in TV tuner) *The screen is a composite image

COLOR VARIATION

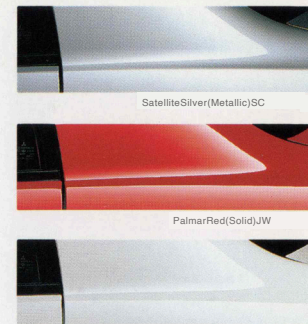
■ RS is available only in Scotia White



● BODYCOLOR: PieneBlack (Pearl) BF



● BODYCOLOR: DandelionYellow (Solid) DJ



● BODYCOLOR: Scotia White (Solid) ZE

EQUIPMENT

Main Equipment

● Standard equipment OP Manufacturer option

| Category | GSR | RS |
|--|----------------------|-----------------------------------|
| Exterior | | |
| Special aluminum hood with large air outlet | ● | ● |
| Front grille-integrated special color bumper | ● | ● |
| Large front bumper extension | ● | ● |
| Large side air dam | ● | ● |
| Rear under spoiler | ● | ● |
| Rear wicker & adjustable angle rear spoiler | ● | ● |
| Aero parts-less | | OP*1 |
| Thin sheet body specification | | OP*2 |
| Colored door handles | ● | |
| Rear Garnish | ● | |
| PIA Large front fog lamps | ● | |
| Electric tilt & slide glass sunroof | OP | |
| Electric retractable remote control door mirrors (color) | | |
| Door mirror heater | OP*3 | |
| Front intermittent wiper (with mist function) | Variable | |
| Rear intermittent wiper & washer | | OP |
| Large-diameter elliptical muffler cutter | ● | |
| 205/60R15 91H tires | | |
| 225/45ZR17 tires | ● | OP*4*9 |
| OZ-designed 17-inch aluminum wheels | ● | OP*4*9 |
| Seats | | |
| Sports seat | | ● |
| RECARO full bucket seats | ● | |
| Integrated rear seat pillow | ● | |
| Rear center armrest | ● | |
| Around the | | |
| MOMO genuine leather-wrapped steering wheel | ● Equipped with | ● No Airbag |
| Genuine leather-wrapped shift knob | ● | |
| Meter backlighting | ● | |
| Tachometer | ● | |
| White Meter | ● | |
| LCD Trip & Odometer | ● | |
| Key Cylinder Illumination | ● | |
| Audio Fitting Kit *5 | ● Compatible with | ● 4 speakers, supports 2 speakers |
| AM/FM Electronically Tuned Radio with Full Logic Cassettes (With AM Stereo Function, Compatible with CD Changer) & 6-Speaker | ● | |
| Antenna | ● Rear glass | ● Pole |
| FM Diversity | OP*6 | |
| Digital Clock | ● | |
| Full automatic air conditioning | ● | |
| Interior | | |
| Door trim seat fabric covering | ● | |
| Trunk room trim | ● | |
| Floor console box | ● Large lid included | ● Standard |
| Cup holder | ● | |
| Driver's and passenger's vanity mirrors | ● | |
| Functional Equipment | | |
| Driver and front passenger SRS airbag system | ● | |
| Tilt steering | ● | |
| Quick steering gear ratio | ● | |
| Power windows with safety mechanism | ● | |
| Center door lock | ● | |
| Radio wave keyless entry system | ● | |
| Cold climate specification | OP*3 | OP |
| Fluorescence coating *7 | OP | |
| Inverted strut | ● | |
| Front & rear stabilizers | ● | |
| Front strut tower bar | OP | |
| Front end crossbar & rear end crossbar | ● | ●*8 |
| Front 15-inch ventilated disc brakes (2-pot) & Rear 15-inch ventilated disc brakes (1-pot) | ● | ● |
| Brembo brakes | ● | |
| Front 17-inch ventilated disc brakes (opposed 4-pot) & Rear 16-inch ventilated disc brakes (opposed 2-pot) | ● | OP*4*9 |
| Front brake air duct | ● | |
| 4ABS (4-channel Anti-lock Braking System) | ● | |
| Super cross gear (Low) | | OP*9 |
| Super cross gear (High) | | OP*9 |
| Front helical LSD | ● | OP*9 |
| Rear 1.5WAY mechanical LSD | ● | |
| AYC (Active Yaw Control system) | ● | |

*1: Aero parts-less means the large front bumper extension, fog lamp cover, rear under spoiler, rear wicker & adjustable rear spoiler, high mount stop lamp, and brake air duct are excluded as a set. *2: Thinning of the roof panel and trunk lid panel, and side door beam less option. (For competition use) *3: Door mirror heater and cold region specification are set options. *4: 17-inch aluminum wheels, 225/45ZR17 tires, Brembo brakes (front 17-inch, rear 16-inch), and cross member reinforcement bar are set options. *5: Kit including antenna, harness, and audio bracket for audio installation. *6: FM diversity is a set option with CD changer compatible cassette. *7: Excludes body colors Scotia White, Palmar Red, and Dandelion Yellow. *8: When air conditioning is installed, the front end crossbar is excluded. *9: Cannot be set as a single option; please refer to the combination options below.

Standard equipment on all vehicles

Door sash blackout, halogen headlamps, twilight lamps, heat-absorbing green glass, wiper fin (driver's seat), fuel level warning light, front door pocket, personal pocket, map lamp, trunk room lamp, anti-glare room mirror, footrest, power steering

Standard Safety Equipment for the Entire Vehicle

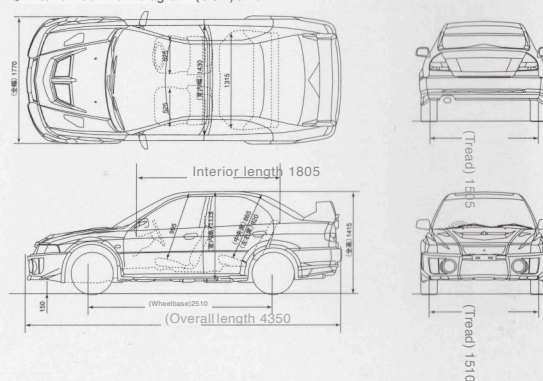
Side door beams, laminated front glass, heated printed rear glass, high-mount stop lamp, front seats with built-in seatbelt buckles, front 3-point ELR seatbelts, rear 3-point ELR seatbelts (left and right seats), center 2-point seatbelt, adjustable seatbelt anchors (front), flame-retardant seats and interior materials, seatbelt non-wearing warning, key removal reminder buzzer, child-proof locks, double accelerator return springs, rollover valve, resin screw-type fuel cap

*9RS Combination Option Table

| |
|---|
| ● Front LSD Helical type |
| ● 17-inch aluminum wheels + 225/45ZR17 tires + brakes (front 17, rear 16 inches) + cross member reinforcement bar |
| ● Super cross 5M/T (High) |
| ● Front LSD Helical type |
| ● 17-inch aluminum wheels + 225/45ZR17 tires + brakes (front 17, rear 16 inches) + cross member reinforcement bar |
| ● Front LSD Helical type |
| ● Super cross 5M/T (Low) |
| ● Super cross 5M/T (Low) |
| ● Front LSD Helical type |
| ● 17-inch aluminum wheels + 225/45ZR17 tires + brakes (front 17, rear 16 inches) + cross member reinforcement bar |

Note: Super Cross 5M/T (High) is set for circuit driving. Super Cross 5M/T (Low) is set for rally, dirt trial, and gymkhana use. Also, since this gear is set for competition use, the engine RPM will be higher, resulting in increased noise and worse fuel economy compared to the standard specification. Please understand this.

Exterior four-view diagram (GSR) Unit: mm



SPECIFICATIONS

Main Specifications

| | | |
|------------------------|-----------------------|----------------|
| Drive System | FULLTIME 4WD | |
| Vehicle Name and Model | Mitsubishi GF-CP9A | |
| | SNFG | SNDF |
| Vehicle Type | 2000 DOHC 16V I/C T/C | |
| | GSR Evolution V | RS Evolution V |
| | 5M/T | |

Dimensions and Weight

| | | |
|-------------------------------|------------|--------|
| Overall Length (mm) | 4350 | 4350*1 |
| Overall Width (mm) | | 1770 |
| Overall Height (mm) | | 1415 |
| Wheelbase (mm) | | 2510 |
| Tread | Front (mm) | 1510 |
| | Rear (mm) | 1495*2 |
| | | 1505 |
| | | 1490*2 |
| Minimum ground clearance (mm) | | 150 |
| Interior length (mm) | | 1805 |
| Interior width (mm) | | 1430 |
| Interior height (mm) | 1175*3 | 1175 |
| Vehicle Weight (kg) | 1360 | 1260 |
| Seating Capacity (persons) | 5 | |

Per

| | | |
|--|--------|-----------|
| Minimum turning radius (m) | 5.5 | |
| 10-15 Mode Fuel Consumption Rate*4 | 9.7 | 10.2 *5*7 |
| (Ministry of Transport Inspection Value) (km/l) | | |
| Fuel Consumption Rate at 60 km/h (Ministry of Transport Notification Value) (km/l) | 17.4*7 | |

Engine

| | |
|---------------------------------------|--|
| Model | 4G63 Turbo |
| Valve mechanism / Number of cylinders | DOHC 16V4-cylinder |
| Bore x Stroke (mm) | 85.0x88.0 |
| Total Displacement (cc) | 1997 |
| Compression Ratio | 8.8 |
| Maximum Output (Net) (PS/rpm)*6 | 280/6500 |
| Maximum Torque (kgf-m/rpm) | 38.0/3000 |
| Fuel Supply System | ECI-MULTI (Electronically Controlled Fuel Injection) |
| Fuel Used | Unleaded Premium Gasoline |
| Tank capacity (l) | 50 |

Power transmission system

| | | |
|-----------------------|----------------|---------------------|
| Transmission type | 5-speed Manual | |
| | | Super cross gear *7 |
| | | Low High |
| Gear ratio | 1st gear | 2.785 |
| | 2nd gear | 1.950 |
| | 3-speed | 1.407 |
| | 4-speed | 1.031 |
| | 5-speed | 0.761 |
| | Reverse | 3.416 |
| Final reduction ratio | 4.529 | 4.875 4.529 |

Running gear

| | | |
|-----------------|--------------------------------|---------------|
| Steering type | Rack & Pinion (Power Steering) | |
| Suspension type | MacPherson Strut | |
| | Multi-link | |
| Brake type | Ventilated disc | |
| | 17 inches | 15 inches |
| | Ventilated disc | |
| | 16 inches | 15 inches |
| Tire size | 225/45ZR17 | 205/60R15 91H |

● Specifications may be changed without prior announcement. Also, these specifications are values reported to the Ministry of Transport. Body color and interior seat colors may appear different from the actual colors due to the nature of film and printing inks. *1: The length is 4345 mm for vehicles without the front bumper extension. *2: When equipped with 17-inch tires, the front width is 1510 mm, and the rear width is 1505 mm. *3: When a sunroof is installed on the GSR Evolution V, the interior height becomes 1140 mm. *4: Fuel consumption rates are values measured under specified test conditions. Actual driving conditions (weather, road, vehicle, driving, maintenance, etc.) differ, so fuel consumption rates will vary accordingly. *5: If the vehicle weight exceeds 1265 kg due to optional equipment, the standard gear fuel consumption rate will be 9.7 km/l. *6: Engine output figures include net and gross values. Net values are measured under conditions almost identical to when the engine is installed in the vehicle, while gross values are measured with the engine alone. For the same engine, net values are approximately 15% lower than gross values (according to the Japan Automobile Manufacturers Association). *7: Super cross gear is a manufacturer option. Fuel consumption rates are 9.7 km/l in the 10-15 mode (9.2 km/l if vehicle weight exceeds 1265 kg), and 16.0 km/l at 60 km/h.

● For details, please contact your salesperson. Manufacturer options must be requested when ordering the vehicle. Since they are installed at the manufacturer's factory, orders cannot be accepted after placement, so please understand.



From Mitsubishi Motors
"Three-Some Support Service A"
team of three consisting of a salesperson,
service advisor, and salesmanager,
promises three best quality services.

Fasten your seatbelt and keep your speed moderate. Safe driving is Mitsubishi's wish.
(Toll Free)

For inquiries about this catalog, please contact your nearest dealer or the Customer Consultation Center below.
(Customer Relations)

Mitsubishi Motors Corporation Nationwide

Toll-Free Customer Consultation Center 0120-324-860

● Opening Hours: Monday to Friday (except designated holidays) 9:00-12:00 13:00-17:00

Creating Together